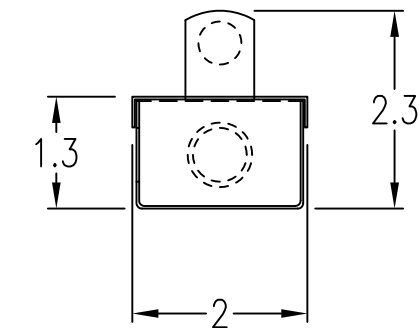


PLAN VIEW



END VIEW

NOTES:

1. UL/CUL LISTED.
2. WATERPROOF BALLAST.
3. WIRED FOR PnP INSTALLATION
4. HEAVY GAUGE STAINLESS STEEL CONSTRUCTION.
5. WEEP-HOLE CONDENSATE RELIEF DESIGN.
6. PRE-PUNCHED MOUNTING HOLES - #6 SCREWS.
7. 6- 1/2" ELECTRICAL KNOCKOUTS-2 ON ENDS, 4- ON SIDES.
8. WARNING LABELS INCLUDED WITH EACH FIXTURE.

GENERAL:

1. REFER TO PRODUCT IOM FOR INSTALLATION DETAILS.
2. USE INTERLOCK SWITCHES ON ALL ACCESSES TO LAMPS.
3. CAUTION: NEVER LOOK AT LAMPS WHEN LIT - EYE AND SKIN DAMAGE MAY RESULT FROM EXPOSURE.

PARTS LIST

'A' DIM	QTY	MODEL#	PART #	DESCRIPTION
21.5"		DEF-221-T5-HO-120-277	52844541	DEF 22" DOUBLE ENDED PLUG-N-PLAY FIXTURE - HIGH OUTPUT - 120-277V
33.5"		DEF-341-T5-HO-120-277	52854541	DEF 34" DOUBLE ENDED PLUG-N-PLAY FIXTURE - HIGH OUTPUT - 120-277V



PO BOX 800370
 SANTA CLARITA, CA 91380 USA
 Ph.: 877.UV4.HVAC FAX: 877.794.1294

DRAWING NAME:

CONTACT:

REP FIRM:

AHU TAG:

QUOTE NO:

LOCATION:

ENGINEER:

CONTRACTOR:

LAMP WATTS PER SQUARE FOOT:

APPLICATION PRESSURE DROP:

TOTAL ELECTRICAL WATTS: