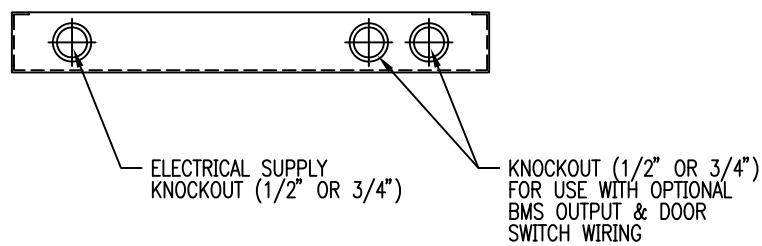
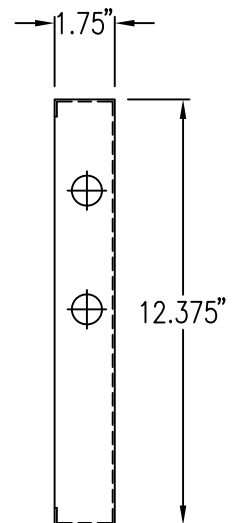
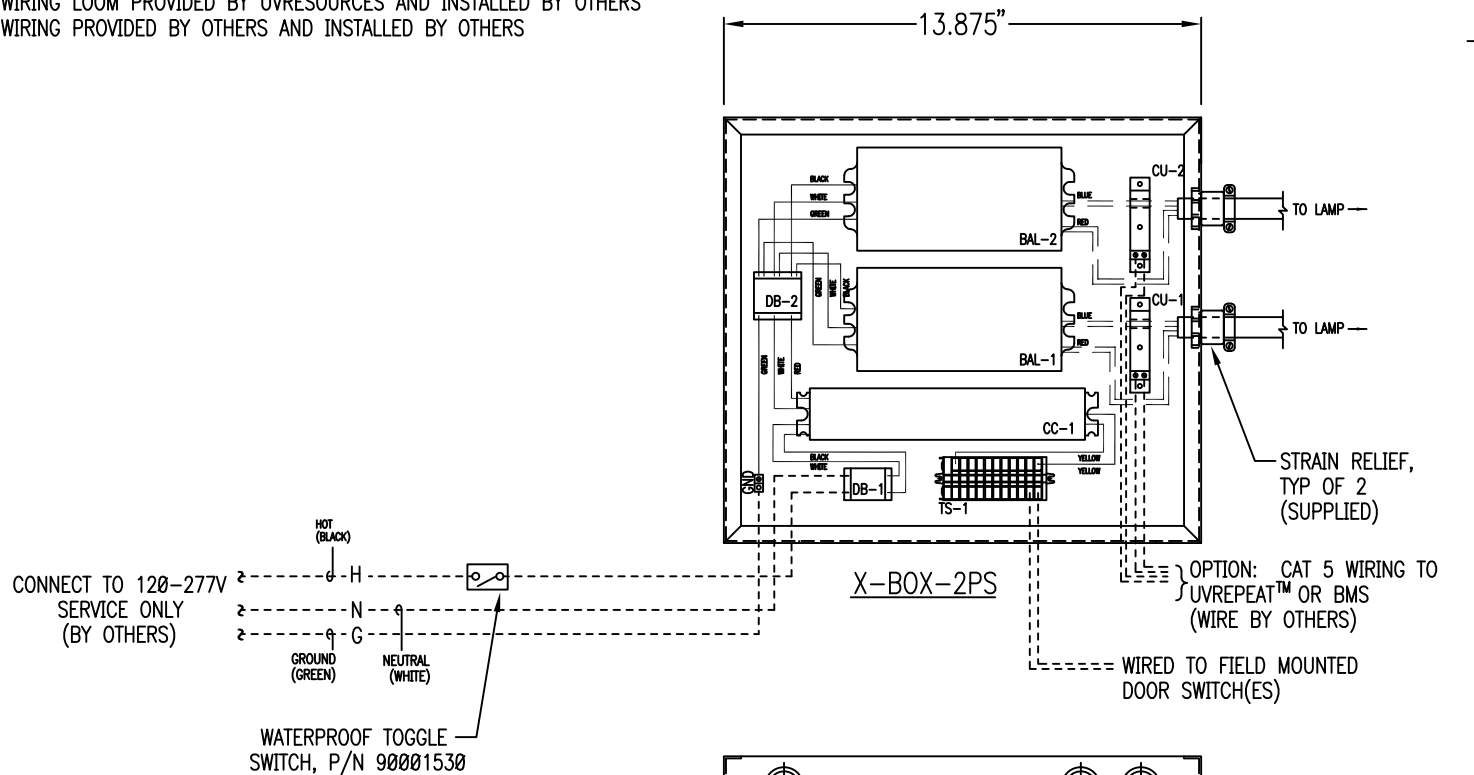


NOTES

- 1) WATERPROOF TOGGLE SWITCH PROVIDED BY UVRESOURCES, FIELD INSTALLED BY OTHERS.
- 2) 12V SAFETY SWITCH SUPPLIED BY UV RESOURCES, MAGNETIC DOOR SWITCH(ES)- UP TO SIX - FIELD INSTALLED BY OTHERS.
- 3) CONSULT LOCAL BUILDING CODES AND THE NEC FOR ANY SPECIAL REQUIREMENTS.
- 4) CAUTION: NEVER LOOK AT LIT LAMPS - PROTECT BOTH EYES AND SKIN.

- _____ WIRING PROVIDED BY UVRESOURCES
- WIRING LOOM PROVIDED BY UVRESOURCES AND INSTALLED BY OTHERS
- WIRING PROVIDED BY OTHERS AND INSTALLED BY OTHERS



Rev	Date	Description
B	12/6/18	GENERAL REVISIONS
A	5/4/18	CHG'D ENCLOSURE DIMENSION TO 12.375"
Ø	10/20/17	FIRST ISSUE



Description:		X-BOX-2PS INSTALLATION WIRING DIAGRAM	
PN:		55000162	
Rev:	Date:	Dwg No.	
B	10/19/17	98000842	1 of 1