



## SLX™ – SINGLE LAMP HIGH OUTPUT FIXTURE

### BENEFITS

- Installs quickly and easily anywhere
- Lamp sizes from 16” to 48”
- High output EncapsuLamp™ for high airborne kill rate
- 120-240V Power Supply
- CU2™ Lamp/Ballast monitoring with BMS Output
- Ideal for airstream pathogen inactivation
- Typical installs provide 360° UV-C Distribution
- Improves indoor environmental quality (IEQ)
- Destroys coil/drain pan microbial growth
- Restores AHU capacity and efficiency
- Industries lowest cost of ownership
- 3 year fixture and ballast warranty
- 1 year lamp warranty

UV-C’s ability to disinfect and degrade organic material is well-established in both research and application (ASHRAE, Science, GSA and the CDC). UV-C systems are also, one of the industry’s most favored maintenance and energy tools. UV-C is used to disinfect air streams and to keep coils, drain pans and other internal air handler components free of microbes, organic dirt and grime. Not treated, these materials produce odor, reduce airflow, reduce cooling capacity and affect occupant productivity!

UV-C systems are widely used in hospitals to disinfect HVAC air streams, cooling coils and drain pans to keep them free of microorganisms. It stops the proliferation of infectious, or, allergenic agents and lowers the cost of maintaining and operating HVAC equipment.

The UV Resources Single Lamp Xterior (SLX) mounted fixture is the most affordable, effective, efficient, and reliable product in the industry. The SLX is constructed of premium materials with heavy gauge steel for sustainability in all environments. It’s 120-240V power supply is waterproof and UV-C germicidal lamps are high output FEP encapsulated, high-efficiency, low-waste content products that surpass today’s environmental standards.

These benefits, along with ease of installation and low cost, make the UV Resources line-up of products and systems the user’s choice for UV-C for today’s HVAC/R equipment.

### Application:

The SLX High Output fixture meets all ASHRAE guidelines and is suitable for most all indoor UV-C applications. It installs from the exterior of HVAC equipment, or, in ducts to achieve the specified irradiance. A variety of lamp sizes ranging from 16” to 48” combined with a smart multi-voltage (120-240V) power supply allow for an easy fit-up in nearly any application.

# SLX™

REPRESENTED BY:

# UVR UV RESOURCES

Corporate Address  
P.O. Box 800370  
Santa Clarita, CA 91380-0370  
Phone 877.884.4822  
Fax 877.794.1294  
Website UVResources.com

## CONSTRUCTION

**FIXTURE** is factory-assembled and tested. It has a powder coated galvanized steel housing, a “waterproof” power source, lamp socket, FEP coated lamp and LED lamp/power supply monitor. Construction is designed to withstand typical HVAC/R environments.

**HOUSING** is constructed of heavy-gauge powder coated galvanized steel with 4 - 1/2” or 3/4” conduit knockouts on the housing’s bottom, sides and end for hard or soft wiring. The fixture is designed to be mounted and serviced from the exterior of its installation site; such that, the lamp protrudes into “conditioned” air. It can be externally mounted anywhere in an HVAC/R system or as shown on system plans.

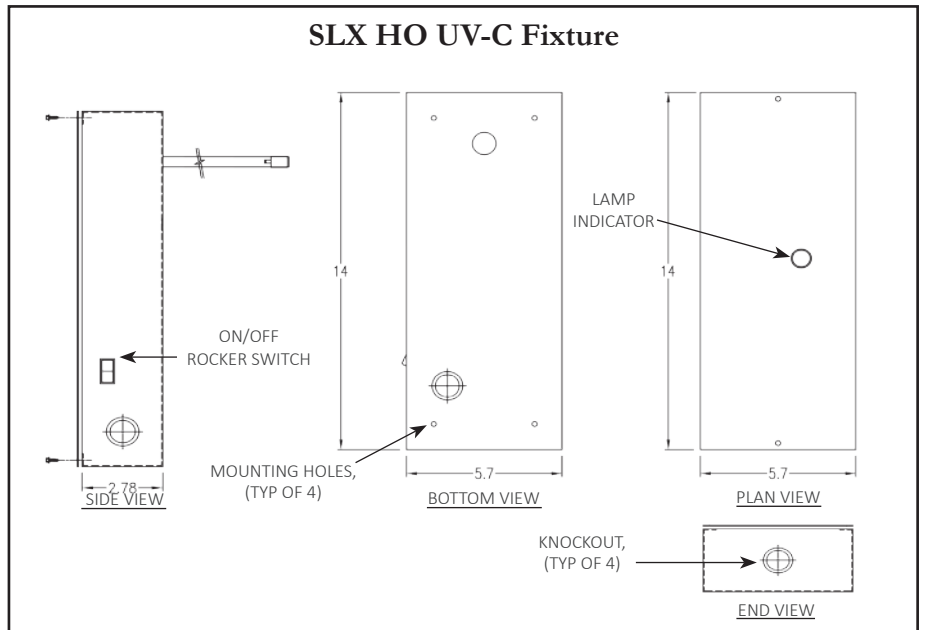
**POWER SUPPLY** is a waterproof, Type 1, outdoor, high-power factor, electronic rapid-start type with overload and end-of-lamp-life circuit protection that maximizes lamp radiance, life, and system reliability at temperatures of 1–70° C. Input: 120-240VAC, 50/60 Hz, with a sound rating of A.

**SOCKETS** are standard 4-pin types constructed of a UV-C resistant polycarbonate for long life and serviceability.

**LAMPS** are non-proprietary, single ended, very high output, hot cathode, T5, O8 4 pin, base types that produce broadband UV-C between 250–260 nm. Lamps are coated with EncapsuLamp™ (FEP) for protection in case of accidental breakage. UV-C lamp produces the specified output at any airflow velocity and temperatures of 1-77° C. Lamps are standard, non-ozone producing types.

Minimum useful lamp life is 9,000, with no more than a 15% output loss, depending on conditions.

**INDEPENDENT TESTING** is in conformance with all safety requirements of Underwriters Laboratories (ABQK).



## ORDERING INFORMATION

Model #	P/N	Description	Electrical	Wt.
SLX-HO-120-240	55706550	SLX™ Single Ended HO UV-C Fixture	120-240V 50 Hz/60 Hz	6 lbs
SEL-16RL-T5O8-HO-1-EL	82685161	16" EncapsuLamp - O8 Base	-	2 lbs
SEL-20RL-T5O8-HO-1-EL	82685201	20" EncapsuLamp - O8 Base	-	2 lbs
SEL-24RL-T5O8-HO-1-EL	82685241	24" EncapsuLamp - O8 Base	-	2 lbs
SEL-31RL-T5O8-HO-1-EL	82685311	31" EncapsuLamp - O8 Base	-	2 lbs
SEL-36RL-T5O8-HO-1-EL	82685361	36" EncapsuLamp - O8 Base	-	2 lbs
SEL-40RL-T5O8-HO-1-EL	82685401	40" EncapsuLamp - O8 Base	-	3 lbs
SEL-48RL-T5O8-HO-1-EL	82685481	48" EncapsuLamp - O8 Base	-	3 lbs

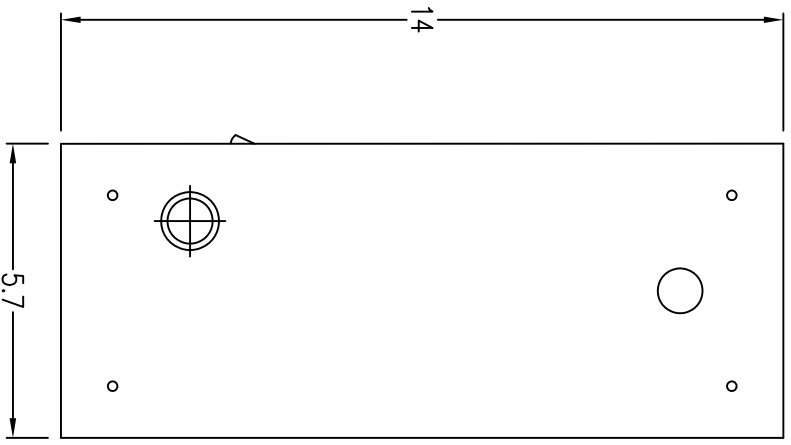


The health aspects associated with the use of this product and its ability to aid in the disinfection of environment air have not been investigated by UL. Air duct mounted accessory with respect to electric shock, fire and casualty hazards only.

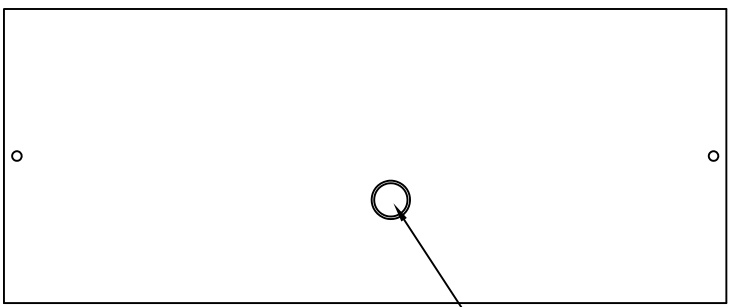
Specifications subject to change without notice.

© UV Resources 2020 55003522 Rev. B

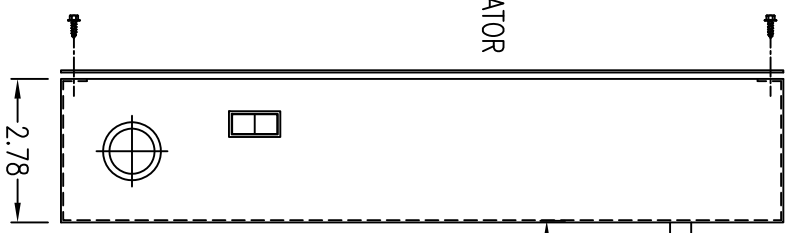
The UVR website contains tools that let you select, specify, and/or purchase complete UV-C systems. You'll also find valuable content that will help simplify installation, operation, and maintenance of UV-C systems. For more information, go to [uvresources.com](http://uvresources.com)



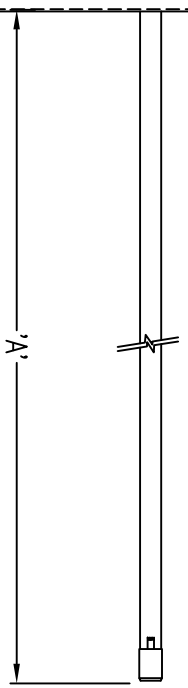
BOTTOM VIEW



PLAN VIEW



SIDE VIEW



**NOTES:**

1. UL/CUL LISTED ABOQ.
2. FOR INDOOR USE ONLY.
3. 2Ø AWG GALVANIZED ASTM-A653/A924
4. (4) 1/2" ELECTRICAL KNOCKOUTS.
5. (4) MOUNTING HOLES.
6. 3 YEAR WARRANTY

**GENERAL:**

1. REFER TO PRODUCT IOM FOR INSTALLATION DETAILS.
2. USE INTERLOCK SWITCHES ON ALL ACCESS TO LAMPS.
3. CAUTION: NEVER LOOK AT LAMPS WHEN LIT - EYE AND SKIN DAMAGE MAY RESULT FROM EXPOSURE.

DIMENSIONAL TOLERANCES: +/-0.03  
 HOLE LOCATION TOLERANCES: +/-0.01

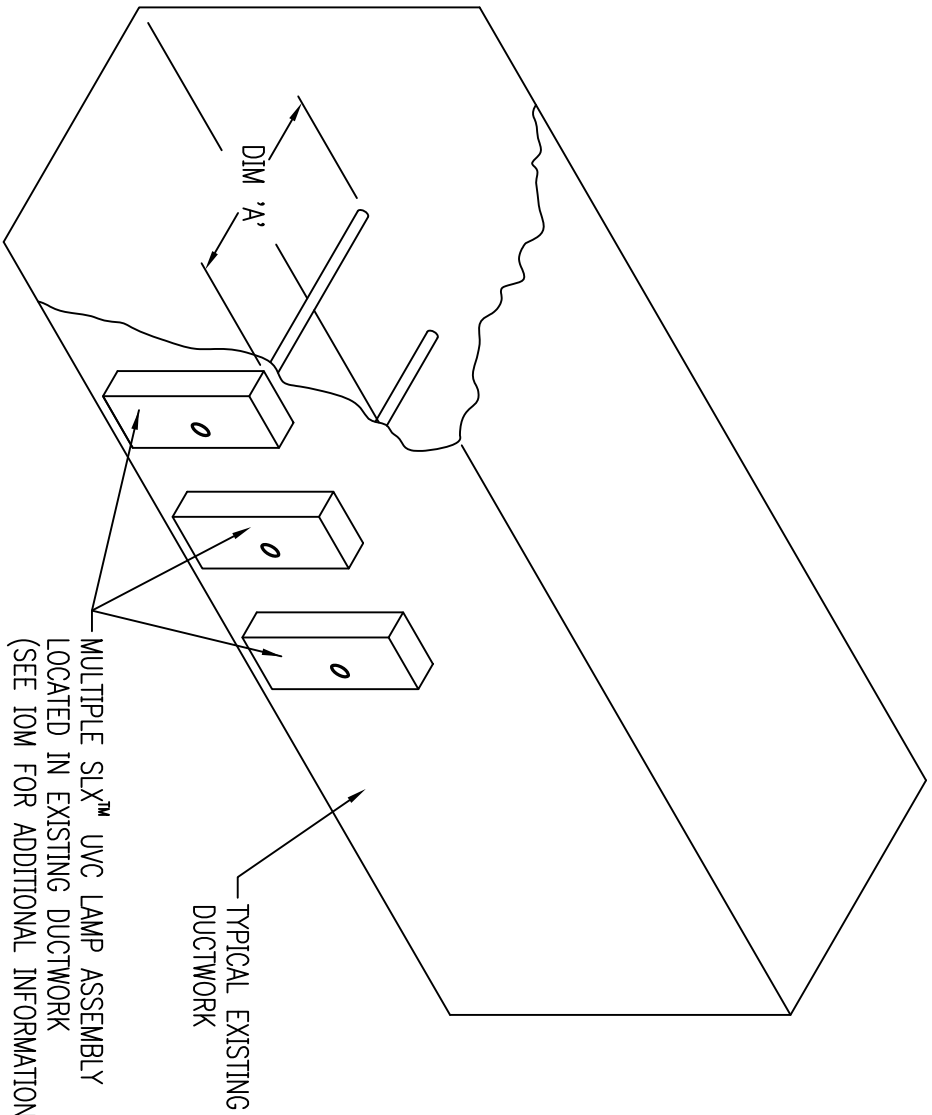
**PARTS LIST**

IN. DIM	QTY	MODEL #	PART #	DESCRIPTION
-		SLX-HO-12Ø-24Ø	575Ø6558	SLX 12Ø-24ØV HO UV-C FIXTURE
15"		SEL-16-15Ø8-HO-EL	82885169	16" DFL ENCAPSULAMP™ - 08 BASE
23"		SEL-24-15Ø8-HO-EL	82885249	24" DFL ENCAPSULAMP™ - 08 BASE
31"		SEL-31-15Ø8-HO-EL	82885319	31" DFL ENCAPSULAMP™ - 08 BASE
35"		SEL-36-15Ø8-HO-EL	82885369	36" DFL ENCAPSULAMP™ - 08 BASE
39"		SEL-4Ø-15Ø8-HO-EL	828854Ø9	4Ø" DFL ENCAPSULAMP™ - 08 BASE
47"		SEL-48-15Ø8-HO-EL	82885489	48" DFL ENCAPSULAMP™ - 08 BASE



Rev	Date	Description
C	4/9/2020	UPDATED LAMP OPTIONS
B	11/20/18	UPDATED DIMENSIONS
A	11/19/18	FIRST ISSUE

Description: SLX 12Ø-24ØV HO FIXTURE  
 P/N: 575Ø655Ø  
 Rev: C Date: 11/19/18 Dwg No: 98ØØ5752  
 1 of 1



MULTIPLE SLX™ UVC LAMP ASSEMBLY  
 LOCATED IN EXISTING DUCTWORK  
 (SEE IOM FOR ADDITIONAL INFORMATION)

TYPICAL EXISTING  
 DUCTWORK

NOTES:

1. UL/CUL LISTED A80K.
2. FOR INDOOR USE ONLY.
3. 20 AWG GALVANIZED ASTM-A653/A924
4. (4) 1/2" ELECTRICAL KNOCKOUTS.
5. (4) MOUNTING HOLES.
6. 3 YEAR WARRANTY

GENERAL:

1. REFER TO PRODUCT IOM FOR INSTALLATION DETAILS.
2. USE INTERLOCK SWITCHES ON ALL ACCESSSES TO LAMPS.
3. CAUTION: NEVER LOOK AT LAMPS WHEN LIT - EYE AND SKIN DAMAGE MAY RESULT FROM EXPOSURE.


PARTS LIST

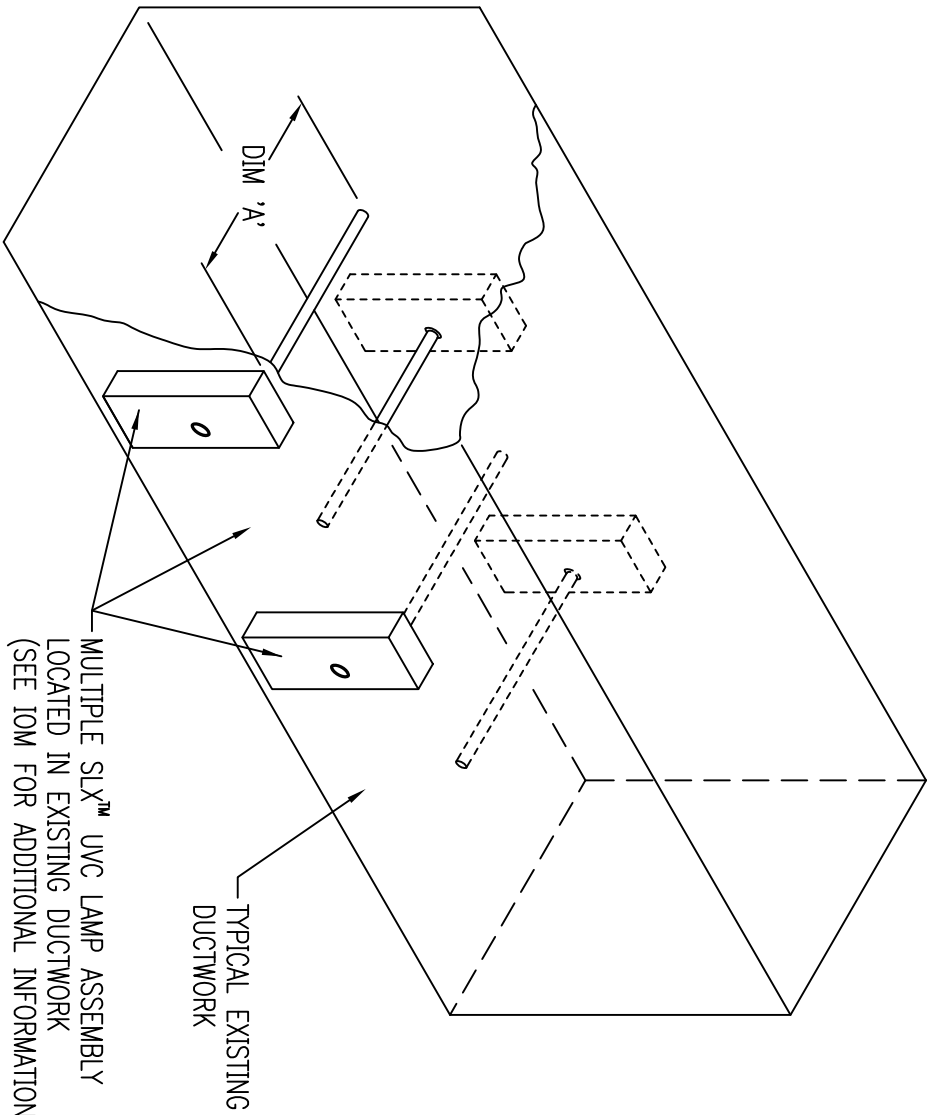
Y. DIM	QTY	MODEL#	PART #	DESCRIPTION
-		SLX-HO-120-240	57506558	SLX 120-240V HO UV-C FIXTURE
15"		SEL-16-1508-HO-EL	82685169	16" DFL ENCAPSULAMP™ - 08 BASE
23"		SEL-24-1508-HO-EL	82685249	24" DFL ENCAPSULAMP™ - 08 BASE
31"		SEL-31-1508-HO-EL	82685319	31" DFL ENCAPSULAMP™ - 08 BASE
35"		SEL-36-1508-HO-EL	82685369	36" DFL ENCAPSULAMP™ - 08 BASE
39"		SEL-40-1508-HO-EL	82685409	40" DFL ENCAPSULAMP™ - 08 BASE
47"		SEL-48-1508-HO-EL	82685489	48" DFL ENCAPSULAMP™ - 08 BASE

Rev	Date	Description
B	4/9/2023	UPDATED LAMP OPTIONS
A	1/4/19	FIRST ISSUE

Description: MULTIPLE SLX™ FIXTURE  
 DUCT MOUNTED INSTALLATION  
 Pk: 57506550

Rev: B Date: 1/4/19 Dwg No: 98005754 1 of 1





MULTIPLE SLX™ UVC LAMP ASSEMBLY  
 LOCATED IN EXISTING DUCTWORK  
 (SEE IOM FOR ADDITIONAL INFORMATION)

NOTES:

1. UL/CUL LISTED A80K.
2. FOR INDOOR USE ONLY.
3. 20 AWG GALVANIZED ASTM-A653/A924
4. (4) 1/2" ELECTRICAL KNOCKOUTS.
5. (4) MOUNTING HOLES.
6. 3 YEAR WARRANTY

GENERAL:

1. REFER TO PRODUCT IOM FOR INSTALLATION DETAILS.
2. USE INTERLOCK SWITCHES ON ALL ACCESSSES TO LAMPS.
3. CAUTION: NEVER LOOK AT LAMPS WHEN LIT - EYE AND SKIN DAMAGE MAY RESULT FROM EXPOSURE.

PARTS LIST

U. DIM.	QTY	MODEL #	PART #	DESCRIPTION
-		SLX-HO-120-240	57506558	SLX 120-240V HO UV-C FIXTURE
15"		SEL-16-1508-HO-EL	82685169	16" DFL ENCAPSULAMP™ - 08 BASE
23"		SEL-24-1508-HO-EL	82685249	24" DFL ENCAPSULAMP™ - 08 BASE
31"		SEL-31-1508-HO-EL	82685319	31" DFL ENCAPSULAMP™ - 08 BASE
35"		SEL-36-1508-HO-EL	82685369	36" DFL ENCAPSULAMP™ - 08 BASE
39"		SEL-40-1508-HO-EL	82685409	40" DFL ENCAPSULAMP™ - 08 BASE
47"		SEL-48-1508-HO-EL	82685489	48" DFL ENCAPSULAMP™ - 08 BASE

Rev	Date	Description
B	4/9/2020	UPDATED LAMP OPTIONS
A	1/4/19	FIRST ISSUE

**UVR**  
 UV RESOURCES

Description: MULTIPLE SLX FIXTURES DUCT MOUNTED BOTH SIDES INSTALLATION  
 P/N: 57506550

Rev: B Date: 1/4/19 Dwg No: 98005755 1 of 1

**SLX™ High Output UV-C Fixture**  
**GENERAL INSTALLATION INSTRUCTIONS**  
**57506550**

 **CAUTION! Never Expose Eyes or Skin to UV-C - Read all Materials before Starting**

**SAFETY CONSIDERATIONS**

Improper installation, adjustment, alteration, service, maintenance, or use can cause fire, electrical shock, or other conditions which may cause personal injury or property damage. Consult a qualified installer, service agency, or your supplier for information or assistance. The qualified installer or agency must use factory kits or accessories when installing this product. Refer to the individual instructions packaged with kits or accessories when installing them. Follow all safety codes, wear safety glasses and work gloves. Read all instructions thoroughly and follow any warnings or cautions attached to any accessed area. Consult local building codes and the National Electrical Code (NEC) for special requirements.

Understand the signal words **DANGER, WARNING or CAUTION**. These words are universally used for overall safety. **DANGER** identifies the most serious hazards, which will result in severe personal injury or death. **WARNING** signifies hazards, which could result in personal injury or death. **CAUTION** is used to identify unsafe practices, which would result in minor personal injury or product and property damage.



**WARNING:** Before installing or servicing this unit, turn off or disconnect all power, there may be more than one (1) switch.



**CAUTION-UV Exposure Precautions:**

1. Doors, covers, lamp mounting brackets, access panels, and removable components that give direct access to Ultraviolet (UV) lamp systems shall be equipped with an interlocking mechanism that removes power from the Ultraviolet (UV) lamp system
2. There should be no openings, holes or joints that allow UV light leakage.
3. Drain pans shall be metallic
4. Some UV installations may require protective barriers (not supplied) to protect users, service personnel and non-metallic parts from UV energy.

**Barriers** (if required, not supplied):

- a. Barrier should be constructed of a material that will not be affected by UV energy (e.g. metal)
- b. Non-Metallic materials may be protected by directly attached barriers such as aluminum coated tape.
- c. Both the unit inlet and outlet should be considered as possible Ultraviolet (UV) radiation paths when determining barrier locations.
- d. The unit filters are not considered Ultraviolet (UV) radiation barriers.

*Removable barriers shall be marked with the words "Caution" and the following or equivalent: "UV LIGHT SOURCE - KEEP PROTECTIVE BARRIER IN PLACE"*



**CAUTION-Material Exposure / degradation:**

1. Any non-metallic parts exposed to UV shall be shielded  
Note: Metallic barriers, and aluminum tape are appropriate means of shielding. Non-metallic parts include, but not limited to, conductors, connectors, enclosures, housings, drain pans, support pieces, gaskets and filters.
2. Protective materials can include barriers (referenced above), conduit, aluminum tape, etc. Please reference ASHRAE® 2016-Systems and Equipment handbook for additional information<sup>1</sup>.
3. Inorganic materials such as glass, glass fibers, and metal are not affected by UV-C exposure<sup>123</sup>.
4. Shield all organic material components within 5 ft (1.5 m) of the UV lamp<sup>1</sup>

<sup>1</sup> ASHRAE-2016. UV-C Photodegradation of Materials. Systems and Equipment Handbook. 17.5-17.6

<sup>2</sup> Kaufman, R.E. 2017. Study the HVAC System Photodegradation Caused by the Low Level UVC Light Irradiance Used for Coil Maintenance and Air Stream Disinfection. ASHRAE Research Project 1724, Final Report

<sup>3</sup> Kauffman, R. 2011. Study the degradation of typical HVAC materials, filters and components irradiated by UVC energy. ASHRAE Research Project RP-1509, Final Report.

### **Power Ratings:**

The SLX is rated for 120-240Vac 50-60Hz, single phase. NOTE: Grounding should be neutral-to-ground.

**\*\*\*Note: Use only "800mA" (high output) T5 diameter, 4-pin single ended (4PSE) lamps – sizes 16" – 48" with this product\*\*\***

### **Compliance:**



Underwriter Laboratories (UL) ABQK, Accessories, Air Duct Mounted. Tested in accordance with ANSI/UL 1995, ANSI/UL 153, ANSI/UL 1598 and ANSI/UL 867. The health aspects associated with the use of this product and its ability to aid in disinfection of environmental air have not been investigated by UL.

Les aspects sanitaires liés à l'utilisation de ce produit et sa capacité à contribuer à la désinfection de l'air ambiant n'ont pas été étudiés par UL.

**EPA™** Federal Insecticide, Fungicide, and Rodenticide Act (FIFRA), EPA Establishment No. 92627

**WARNING:** Eye damage may result from directly viewing the light produced by these lamps. To reduce the risk of exposure to UV radiation, take UV-radiation protective measures for personnel during servicing.

#### **AVERTISSEMENT:**

Le fait de regarder directement la lumière produite par ces lampes peut provoquer des lésions aux yeux. Pour réduire le risque d'exposition aux rayons UV, prenez des mesures de protection du personnel contre les rayons UV lors de la maintenance.

**WARNING:** This fixture is designed for use with germicidal UV-C lamps and must be installed in compliance with competent technical directions so that user's eyes and bare skin will not be subjected to injurious rays.

#### **AVERTISSEMENT:**

Cet appareil est conçu pour être utilisé avec des lampes UV-C germicides et doit être installé conformément aux instructions techniques en vigueur de sorte que les yeux et la peau nue de l'utilisateur ne soient pas soumis à des rayons nocifs.

**WARNING:** There shall not be any supply or return air openings or any other openings that are in direct line of sight of the UV bulb.

#### **AVERTISSEMENT:**

Il ne doit pas y avoir d'ouvertures d'alimentation en air ou de retour dans les conduits ni d'autres ouvertures directement visibles de la lampe UV

**WARNING:** There shall not be any openings in the duct that would emit light.

**AVERTISSEMENT:** Il ne doit y avoir aucune ouverture dans le conduit émettant de la lumière

**WARNING:** UV Light Hazard. To prevent exposure to ultraviolet light, be sure the ultraviolet air treatment system is disconnected before servicing any part of the HVAC system or removing any access panel or the equivalent.

#### **AVERTISSEMENT:**

Risque de rayons UV. Pour éviter toute exposition aux rayons ultraviolets, assurez-vous que le système de traitement d'air par ultraviolets est débranché avant de procéder à toute opération de maintenance ou de retirer tout panneau d'accès ou l'équivalent.

**CAUTION:** Personal Injury Hazard. Power supply can cause electrical shock. Disconnect power supply before servicing or beginning installation.

**ATTENTION:** Risque de blessure corporelle. L'alimentation peut provoquer un choc électrique. Débranchez l'alimentation avant de réparer ou de commencer l'installation.

**CAUTION:** Risk of exposure to excessive ultraviolet (UV) radiation - Do not operate without complete lamp enclosure in place or if sight lens is damaged.

#### **MISE EN GARDE:**

Risque d'exposition à un rayonnement ultraviolet (UV) excessif - Ne pas utiliser sans la protection complète de la lampe ou si la lentille est endommagée.

## Power Consumption: Electrical


MODEL #	Electrical Watts*	Amps @ 120V	Max °F	Lamp Watts
SLX-16-T5O8-HO-EL	43	0.36	150°F	40W
SLX-20-T5O8-HO-EL	52	0.43	150°F	48W
SLX-24-T5O8-HO-EL	62	0.52	150°F	58W
SLX-31-T5O8-HO-EL	78	0.65	150°F	72W
SLX-36-T5O8-HO-EL	86	0.72	150°F	80W
SLX-40-T5O8-HO-EL	108	0.90	150°F	100W
SLX-48-T5O8-HO-EL	129	1.08	150°F	120W

\*To calculate amps, divide watts electrical by supplied voltage (120-277Vac 50-60Hz, single phase)

### What's included:

- SLX Fixture
- SLX installation Kit:
  - Installation Operation Manual (IOM)
  - Door Warning Label (English)
  - Self-Drilling Mounting Screws (x4)
  - Performance Specification Label

### Installation (designed for metal plenums only):

- 
1. Consult all applicable codes before installing. Check fixture label(s) for the correct power requirements and supply the correct voltage from a suitable, protected (fused or breaker), and grounded power source.



**CAUTION: Using other than labeled voltage voids product warranty and may do damage to the entire system. Fixtures should be operated continuously to avoid the growth of mold and bacteria during optimum conditions (AHU is off).**

2. Power must also be switched at all install access points with a properly rated, SPST interlock switch to completely de-energize the assembly when its install location is accessed. Accesses are to have signs in appropriate languages alerting maintenance personnel to the possible hazard of looking at or exposing skin to UV-C energy (English label provided).
3. Once the mounting location is identified, use the SLX fixture housing as a template by removing the cover and marking lamp insertion hole on the metal surface (mounting screw holes can be marked if necessary).
4. Drill a 7/8" lamp hole using proper bit (e.g.: step drill bit). **CAUTION: Do not drill into refrigerant lines, electrical wires or fan, etc.**
5. Align SLX fixture housing to lamp hole and attach to surface using 4 self-tapping/self-drilling screws (provided).
6. For additional protection, it is recommended that the entire perimeter of the SLX housing be sealed with appropriate sealant (e.g. RTV silicone, not included).

### Connecting Power:

1. Read fixture label – be sure to sum the power requirements when installing more than one fixture. Wire with the proper 'wire gauge' in accordance with the NEC and local codes.
2. Power-in must be interruptible at all UV access points using a properly rated, SPST interlock switch to completely de-energize the UV lights when their location is accessed.  
Note: The SLX fixture has a power switch on its side to de-energize the fixture prior to removing fixture cover.

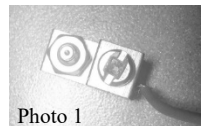
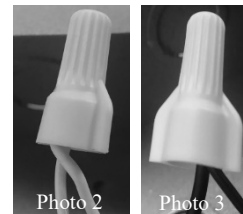


Photo 1



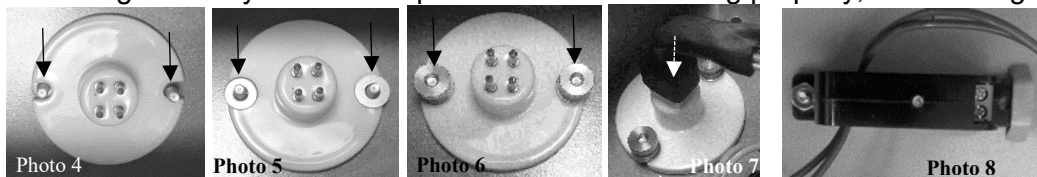
3. There are four electrical knockouts on the product for ease of installation. Select knockout to be used, leave all others sealed.
4. Using a wire connector (provided), connect the green (ground) wire to the “grounding lug” (Photo 1)
5. Using a wire connector (provided), connect the white wire (“neutral”) to the white wire coming from the ballast. (Photo 2)
6. Using a wire connector (provided), connect the black wire (“hot”) to the black wire coming from the switch. (Photo 3)
7. Apply Warning Labels on all access doors/ports/panels as indicated above (one included).



### **Installing lamps**

Note: The SLX Fixture uses EncapsuLamp™ technology (FEP coated lamps) therefore you can handle the lamp and not worry about cleaning the surface.

1. Remove the “thumb nuts” and washers from the lamp mounting studs.
2. Insert lamp thru hole into plenum until lamp base is aligned with mounting studs (Photo 4);
3. Replace the washers and thumb nuts, finger tighten snug; (Photo 5 & 6) **DO NOT OVER TIGHTEN**
4. Align lamp connector with pins on lamp and push until pins are completely inserted into connector; (Photo 7)
5. CU2™ (Photo 8) provides lamp/ballast status and can be used to communicate with a building management system. (See CU2 manual for additional information)
6. Replace fixtured lid with two screws.
7. Energize the system. If lamp and ballast are working properly, the CU2’s green LED will be lit.



### **Replacing Lamps**

Ultraviolet lamps should be replaced annually if operated continuously (recommended) or after 9,000 hours of use if operated intermittently. Replacement lamps must be the specific size and wattage as originally supplied from the factory. **Note:** Although the lights may continue to generate a characteristic blue glow beyond 9,000 operating hours, the ultraviolet radiation emitted by the lamps degrades over time and will no longer provide the intended benefit.

### **Maintenance:**

The intensity of the ultraviolet energy emitted from the UV lamps is dependent on the cleanliness and lamp age. The surface of the lamp should be kept as clean as possible for optimum intensity. Depending on the filtration level of the HVAC system and the general hygiene of the building, periodic cleaning may be necessary. Before attempting any maintenance procedures, always follow all warnings and cautions as detailed in this maintenance section.

### **Cleaning Lamps**

Note: If lamps are found to be broken, see the proper warning and cautions below regarding broken lamps and hazardous vapors.

1. Disconnect all electrical power to the unit and the UV lamps.
2. Wearing soft cloth gloves and safety glasses remove lamp from SLX
3. Wipe down each lamp with a clean cloth and isopropyl alcohol. Avoid touching lamp glass with hands as skin oils can accelerate lamp degradation. (If lamps are coated with Teflon they can be touched with bare hands).

**Lamp Disposal:**

UV lamps should be treated the same as other mercury-containing devices, such as fluorescent lamps, according to local regulations. Most lamps must be treated as hazardous waste and cannot be discarded with regular waste. Low-mercury lamps often can be discarded as regular waste; however, some states and local jurisdictions classify these lamps as hazardous waste. The U.S. EPA's universal waste regulations allow users to treat mercury lamps as regular waste for the purpose of transporting to a recycling facility. The National Electrical Manufacturers Association (NEMA) maintains a list of companies claiming to recycle or handle used mercury lamps at [www.lamprecycle.org](http://www.lamprecycle.org)

**EQUIPMENT WARRANTY**

UV Resources™ (UVR) warrants to the original buyer that its Products shall be free from defects in material or workmanship under normal use and service for the periods of time set forth below. This warranty is contingent upon proper use of Products and will not apply if adjustment, repair or parts replacement is required because of an accident, unusual physical, electrical or electro-mechanical stress, neglect, misuse, failure of electric power, humidity control, transportation, unauthorized repair actions, or not installed or maintained in accordance with UVRs' specifications hereunder, or where Product serial numbers have been altered, defaced, or removed. UVRs' obligation under this warranty shall not arise until the Purchaser of the Product returns the defective part to UVR. This warranty is limited to the repair and/or replacement of parts. This warranty does not cover any labor or subsequent damage incurred as the result of Product failure or indirectly arising from the design, construction, installation, servicing, or operation of Products. UVR and its resellers' liability under this warranty shall in no event exceed the cost of goods sold under the original sale contract.

Under the conditions specified above, UV Resources warrants all SLX fixtures for a period of three (3) years from date of purchase and all lamps for a period of 12 months from date of installation provided lamps are installed within 3 months from date of purchase. Buyer must provide proof of purchase. This is UVRs' sole warranty. No warranties are extended beyond those described herein and it is expressly agreed that this warranty will be in lieu of all warranties of fitness and merchantability. UVR neither assumes, nor authorizes any person to assume for it, any obligation in connection with the Products. Buyer shall not return to UVR any allegedly defective goods without UVRs' prior written authorization. This warranty may not be assigned or transferred.

