



# GENERAL INSTALLATION INSTRUCTIONS P/N: 57303551



**CAUTION! NEVER EXPOSE EYES OR SKIN TO UV-C ENERGY  
READ ALL MATERIALS BEFORE STARTING**

## APPLICATION:

The Hornet's unique "low-voltage" 24V ballast and adapter deliver up to 20 Watts of UV-C power into most any application. Its lamp and socket are water-resistant, and 24V power means reduced danger from fire or shock, and code restrictions are few. The Hornet™ installs simply from the exterior of HVAC equipment, no need to access the systems interior. Simply create a 2- 7/8" insertion hole at the intended site, mount the fixture and plug its adapter into a nearby wall socket, or, wire it to a suitable 24V transformer (with no power fluctuations) or to a UV Resources 24V switching power supply (P/N: 90004939).



**NOTE: THE HORNET IS RATED AT 22VA. IT IS RECOMMENDED THAT THE ANTICIPATED 24V SOURCE BE CHECKED FOR ITS ABILITY TO SERVICE A 22VA LOAD. A SEPARATE TRANSFORMER IS RECOMMENDED.**

## SAFETY CONSIDERATIONS

Improper installation, adjustment, alteration, service, maintenance, or use can cause fire, electrical shock, or other conditions which may cause personal injury or property damage and loss of warranty. Consult a qualified installer, service agency, or your supplier for information or assistance. The qualified installer or agency must use factory kits or accessories when installing this product. Refer to the individual instructions packaged with kits or accessories when installing them. Follow all safety codes and wear safety glasses and work gloves. Read all instructions thoroughly and follow any warnings or cautions attached to any accessed area. Consult local building codes and the National Electrical Code (NEC) for all applicable requirements.

Understand the signal words **DANGER, WARNING** or **CAUTION**. These words are universally used for overall safety. DANGER identifies the most serious hazards, which will result in severe personal injury or death. WARNING signifies hazards, which could result in personal injury or death. CAUTION is used to identify unsafe practices, which would result in minor personal injury or product and property damage and loss of warranty.



**WARNING:** Before installing or servicing this unit, turn off all power, there may be more than one (1) switch.

## GENERAL:

1. Hornet™ fixtures are used to bathe surfaces, air or both with UV-C energy. For surfaces locate the HORNET at known growth areas such as above the coil and drain pan first, then other moist areas around humidifiers, etc. They can also be placed in return, supply and mixed air plenums or any combination of these locations.
2. Check first for power 120V wall socket availability or 24V AC/DC and all possible service requirements.

## POWER REQUIREMENTS:

**24V AC/DC- 50/60Hz-1 AMP. WARNING: Connecting to inductive load circuits will damage unit and void the warranty!**

## INSTALLATION: (DESIGNED FOR METAL PLENUMS/DRAIN PANS AND DUCTING):

1. Consult all applicable codes before installing. Check fixture label(s) for the correct power requirements and supply the correct

voltage from a suitable, protected (fused or breaker), and grounded power source.

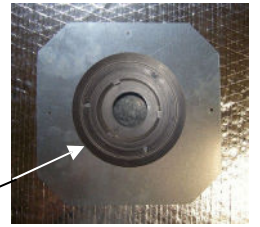


**CAUTION: Using other than labeled voltages voids warranty and may damage to the entire system. Operate fixture continuously to avoid growth of mold and bacteria in damp areas (when AHU is off) and to extend product life.**

2. Provide a SPST interlock switch to accesses that enable visible contact to UV-Clight, to de-energize fixture when accessed. Apply signs alerting maintenance personnel to the hazard of looking at, or exposing skin to UV-C energy. English provided.

**Note:** UV-C energy may damage certain plastics. Protect susceptible items with UV-C resistant materials such as aluminum tape, foil or aluminum paint when these items are in “line of sight” of UV-C energy.

3. Determine mounting location and apply template - cut the hole using 2 7/8” hole saw (provided).
4. When installing on duct-board, use the provided Duct-Board Mounting Plate to provide a suitable mounting surface. Apply template to the Mounting Plate.
5. Slide mounting “ring” into hole and affix with 3 Phillips screws (provided).



Mounting ring



**CAUTION: Do not drill into refrigerant lines or other critical parts, etc.**  
**CAUTION: After cutting hole avoid sharp edges.**

6. Remove LampClamp™ ‘nut’ (photo C). Insert lamp into socket until it “clicks” in. Slide LampClamp over end of lamp and hand tighten.
7. Insert power supply/UV lamp into the mounting ring; pull up on yellow locking clip; turn clock-wise until power supply is fully installed.
8. Push-in yellow locking clip to lock power supply into mounting ring (photo C)
9. The Hornet comes with a “light on” indicator – when light is on, the indicator will “glow” blue (photo D)

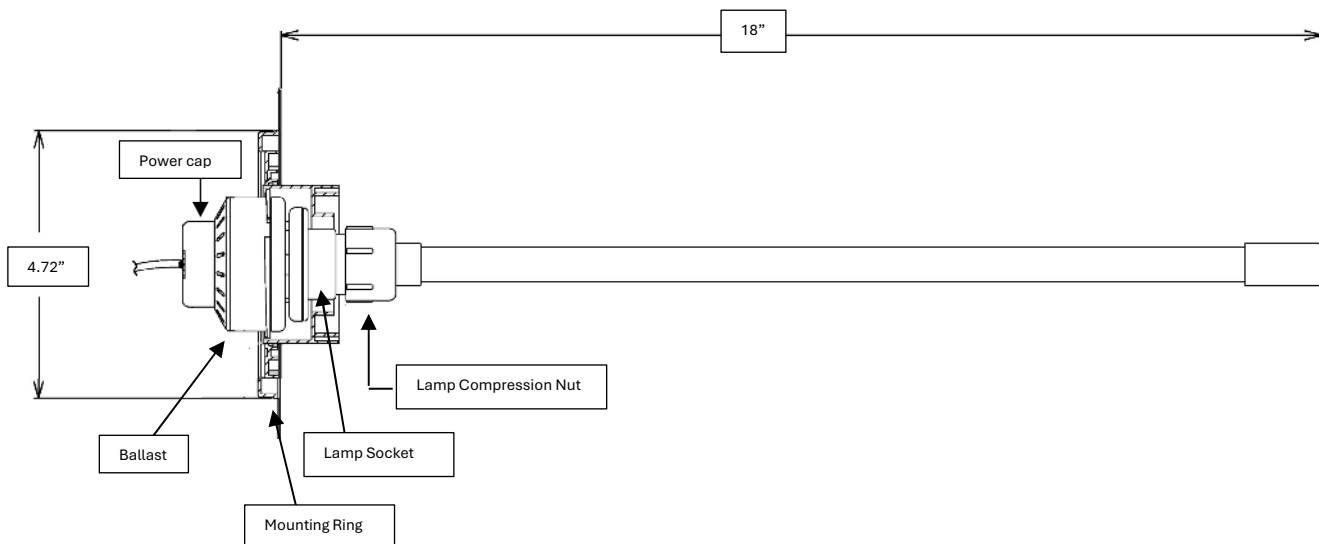


Lamp Compression Nut

Locking clip

### CONNECTING POWER:

1. Hardwiring: Read labeled power requirements – wire to 24V-1A, AC/DC power, in accordance NEC and local codes.
2. All power-in ‘wire’ and ‘switch ratings’ must be in accordance with applicable codes. Power must also be switched at all install access points with a properly rated, SPST interlock switch in order to completely de-energize the assembly when its install location is accessed.
3. Connect power “cap” (white) to fixture and twist clockwise to secure.
4. Soft wiring: A 24V AC/DC adapter is provided. Plug adapter into 120V wall socket and secure.



## MAINTENANCE:

The intensity of the ultraviolet energy emitted from the UV lamps is dependent on the cleanliness and lamp age. The surface of the lamp should be kept as clean as possible for optimum intensity. Depending on the filtration level of the HVAC system and the general hygiene of the building, periodic cleaning may be necessary. Before attempting any maintenance procedures, always follow all warnings and cautions as detailed in this maintenance section.

## CLEANING LAMPS

Note: If lamps are found to be broken, see the proper warning and cautions below regarding broken lamps and hazardous vapors.

1. Disconnect all electrical power to the unit and the UV lamps.
2. Wearing soft cloth gloves and safety glasses grasp lamp with fingers and twist lamp until it can be removed from tombstone.
3. Wipe down each lamp with a clean cloth and isopropyl alcohol. Avoid touching lamp glass with hands as skin oils can accelerate lamp degradation. (If lamps are coated with Teflon they can be touched with bare hands).
4. Apply dielectric grease to 4 pins. Place lamp back in tombstone and twist lamp until it clicks into place.

## REPLACING THE LAMPS ANNUALLY

Ultraviolet lamps should be replaced annually if operated continuously or after 9,000 hours of use if operated intermittently. Replacement lamps must be the specific size and wattage as originally supplied from the factory.

Note: Although the lamps may continue to generate a characteristic blue glow beyond 9,000 operating hours, the ultraviolet energy emitted by the bulbs degrades over time and will no longer provide the intended benefit.

## LAMP DISPOSAL:

UV lamps should be treated the same as other mercury-containing devices, such as fluorescent bulbs, according to local regulations. Most lamps must be treated as hazardous waste and cannot be discarded with regular waste. Low-mercury bulbs often can be discarded as regular waste; however, some states and local jurisdictions classify these lamps as hazardous waste. The U.S. EPA's universal waste regulations allow users to treat mercury lamps as regular waste for the purpose of transporting to a recycling facility. The National Electrical Manufacturers Association (NEMA) maintains a list of companies claiming to recycle or handle used mercury lamps at [www.lamprecycle.org](http://www.lamprecycle.org).

## LIMITED EQUIPMENT WARRANTY

FOR DETAILED INFORMATION, VISIT <https://uvresources/warranty>



VALENCIA, CA 91355 Phone: 877.884.4822

**Uvresources.com**

*Specifications subject to change without notice - © 2024, all rights reserved.*